



THE MILK COOLING SYSTEMS SPECIALISTS™

# **Mueller Matic® Pump and Spray Dish Replacement Parts**

## **Section MM**

Effective July 30, 2014

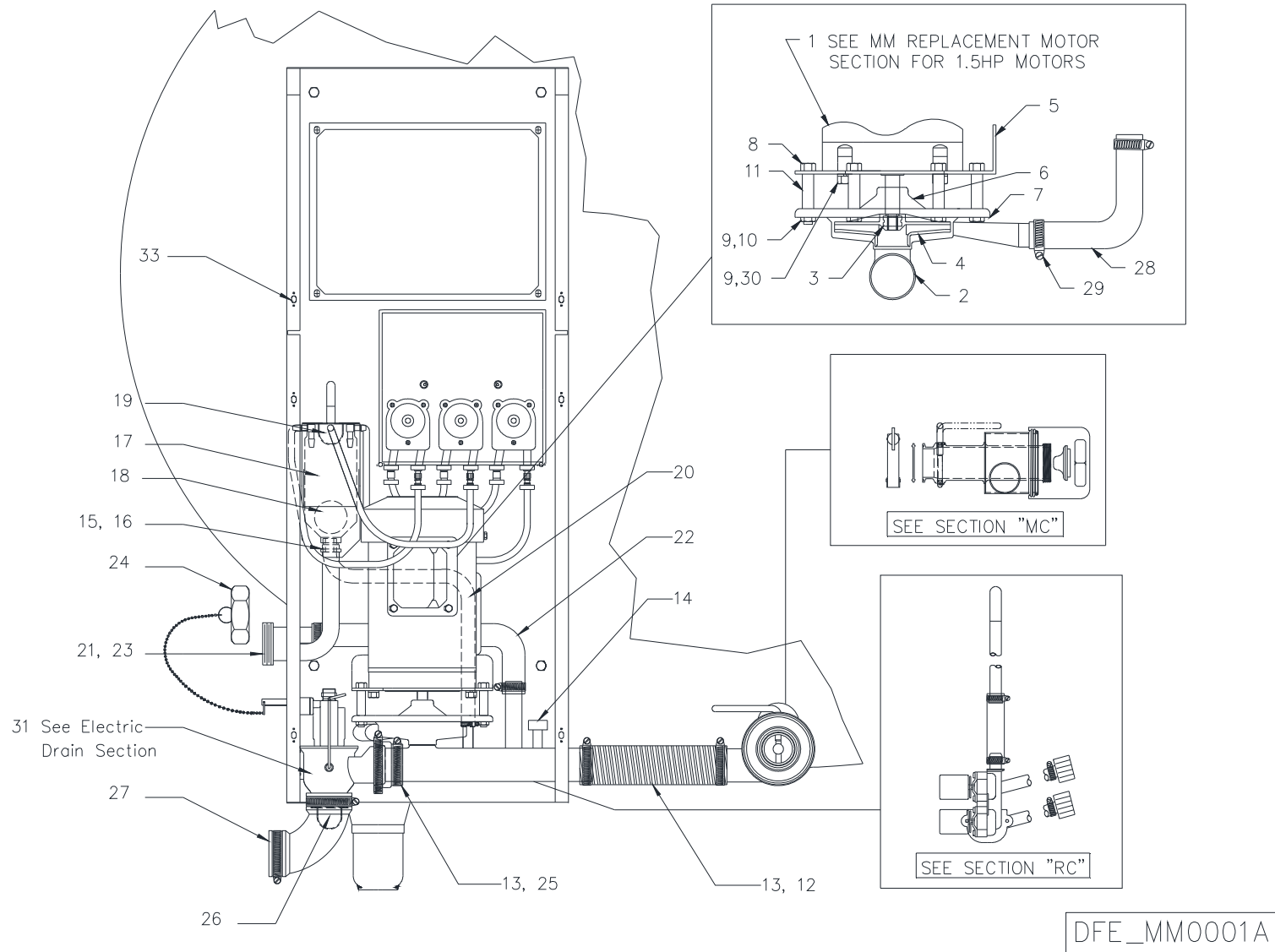


## Table of Contents

Mueller "OHF" 1.5 HP Pump Assembly.....	MM 1.1
Mueller "OHF" .75 HP Pump Assembly.....	MM 2.1
Mueller "CMWS" 1.5 HP with Electric Drain.....	MM 3.1
Mueller "CMWS" .75 HP with Electric Drain.....	MM 4.1
Mueller 1.5 HP Front Mount Pump Assembly.....	MM 5.1
Mueller Cooler-Mounted Washer, 1.5 HP.....	MM 6.1
Mueller Cooler-Mounted Washer, .75 HP.....	MM 7.1
Mueller Manway Wash Tube.....	MM 8.1
Mueller Spray Dish Components.....	MM 9.1
Mueller Matic® 727 Jet-Tube Pump Assembly, 1.5 HP.....	MM 10.1
Mueller Matic 727 Jet-Tube Housing Assembly.....	MM 11.1
Mueller Matic Remote Housing Assemblies.....	MM 12.1
Mueller Matic 326 Jet-Tube Pump Assembly, .75 HP.....	MM 13.1
Mueller Matic 326 Jet-Tube Housing Assembly.....	MM 14.1
Mueller Matic 76 Jet-Tube Pump Assembly, .33 HP.....	MM 15.1
Mueller Matic Drain Valve Assemblies.....	MM 16.1
Replacement Motors and Components.....	MM.17.1
Mueller Drain Valve 24 VAC.....	MM.18.1

Prices subject to change without notice. Paul Mueller Company is not responsible for typographical errors. Drawings are not certified and are intended for part reference only.

# Mueller "OHF" 1.5 HP Pump Assembly



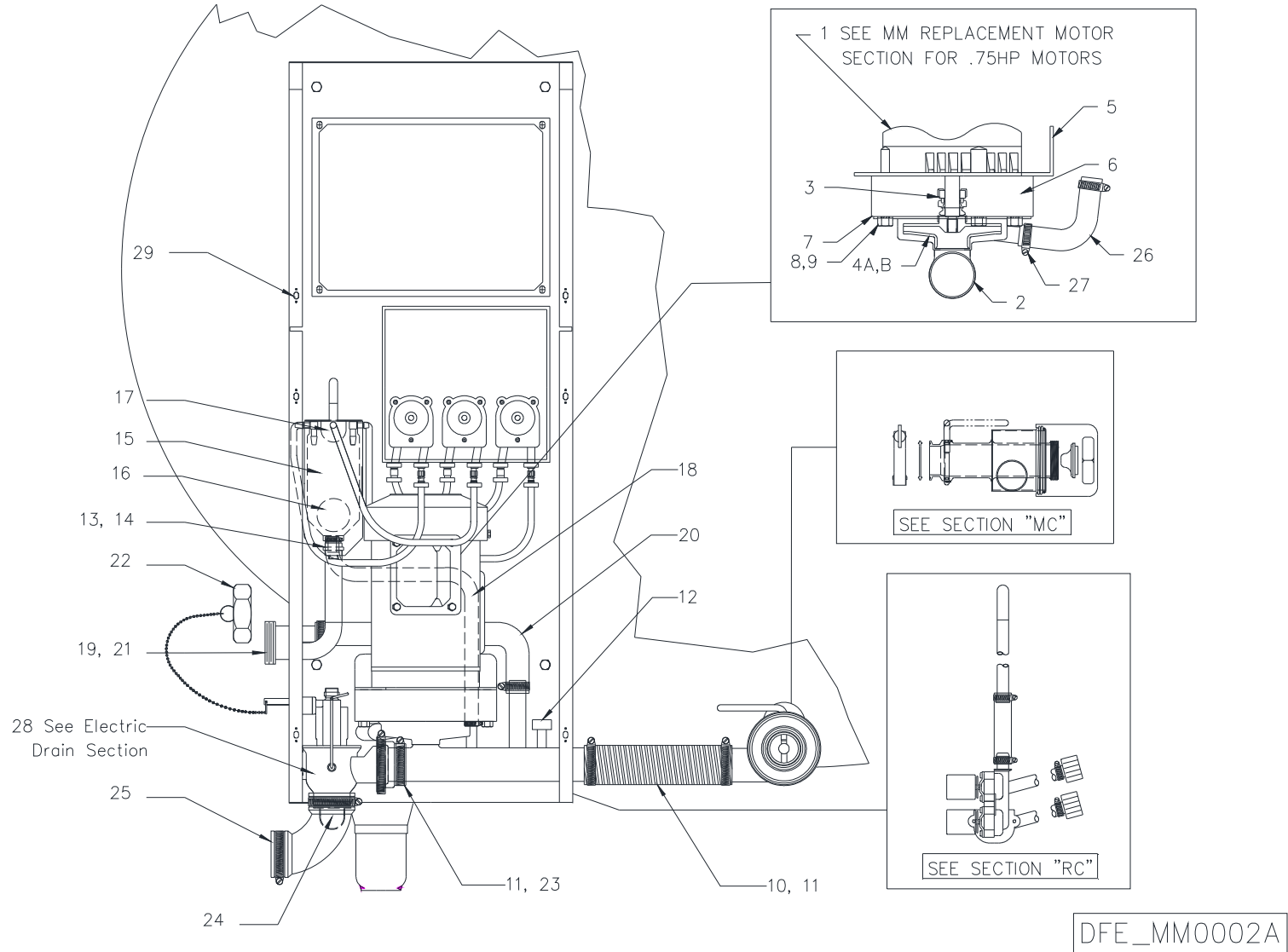
## Mueller "OHF" 1.5 HP Pump Assembly

REFERENCE NO.	DESCRIPTION	PART NUMBER
1	Motor, electric, 1.5 HP (see replacement motor section)	—
2A	Housing and tube assembly, for 1.5 HP pump motor (Without external gauge hose connection)	8823047
2B	Housing and tube assembly, for 1.5 HP pump motor (With external gauge hose connection)	8825830
3	Seal shaft, Buna rubber and S/S	3909
4	Impeller, 5" OD, Radel 5,000 (for 1.5 HP pump) (Includes Part No. 31324, O-Ring)	8826174
5	Bracket, pump mounting, 304 S/S	8823048
6	Seal retainer housing, S/S	8822202
7	Gasket, pump housing, 8.125" OD, .25" Thick (for 1.5 HP pump)	30691
8	Cap screw, .375" x 16 NC x 2.5", 18-8 S/S	8800248
9	Washer, lock, .375" split, S/S	30535
10	Nut, hex, .375" x 16 NC, 18-8 S/S	30532
11	Spacer tube, .5" OD x 1.5" LG, S/S	8822204
12	Hose, 2.0" ID, reinforced (purchased by the inch)	8823015
13	Hose clamp, S/S, adjustable 1.813" - 2.75"	3881
14	Switch, pressure, 1" water column - .036 psi	N/A
15	Gasket, seat	8823275
16	O-ring, FDA approved, .139" dia X .984" ID (package of 6)	91863
17	Valve, float tube	8823026
18	Float ball, 70mm OD	8823027
19	Screen, float tube, 304 S/S	8823033
20	Hose, .5" ID, .813" OD, vinyl	8823070
21	Diverter assembly	8824500
22	Elbow, rubber hose, 1" ID, 90°	8824515
23	Screen diverter tube assembly	8824517
24	Closure, plastic, 2" (includes item no. 34, silicone gasket)	8824668
25	Adapter, rubber outlet ferrule, 2" slip x 2" ferrule. was part # 30419	8826926
26	Screen, drain valve, 304 S/S	8823058
27	Elbow, rubber, 2" x 90°, with hose clamps	8823076
28	Elbow, 90°, FDA rubber, 1.125" ID x 1" ID x .1875" wall thickness	8823884
29	Hose clamp, S/S, adjustable 1.06" - 2"	30420
30	Cap screw, .375" x 16 NC x .75", 18-8 S/S	30529
31	Valve, drain (see electric drain valve section)	—
32*	O-ring #31324, FDA approved (For Part No. 8826174, 5" OD Impeller) sold qty. of 6	8801960
33	Kit Replacement Screws with Receptacle for "OHF" Cabinet (includes 4 screws)	8825601
34*	Gasket, Silicone	8825102

\* Not Shown

MM 1.1B

# Mueller "OHF" .75 HP Pump Assembly



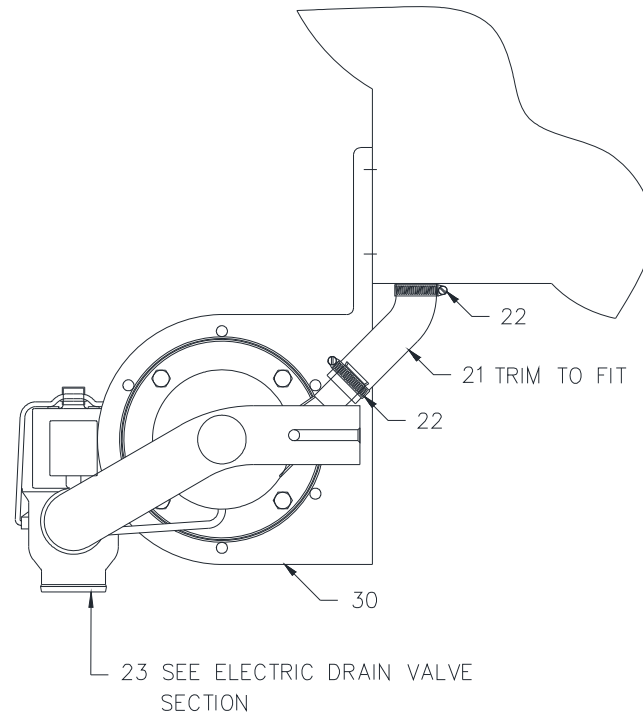
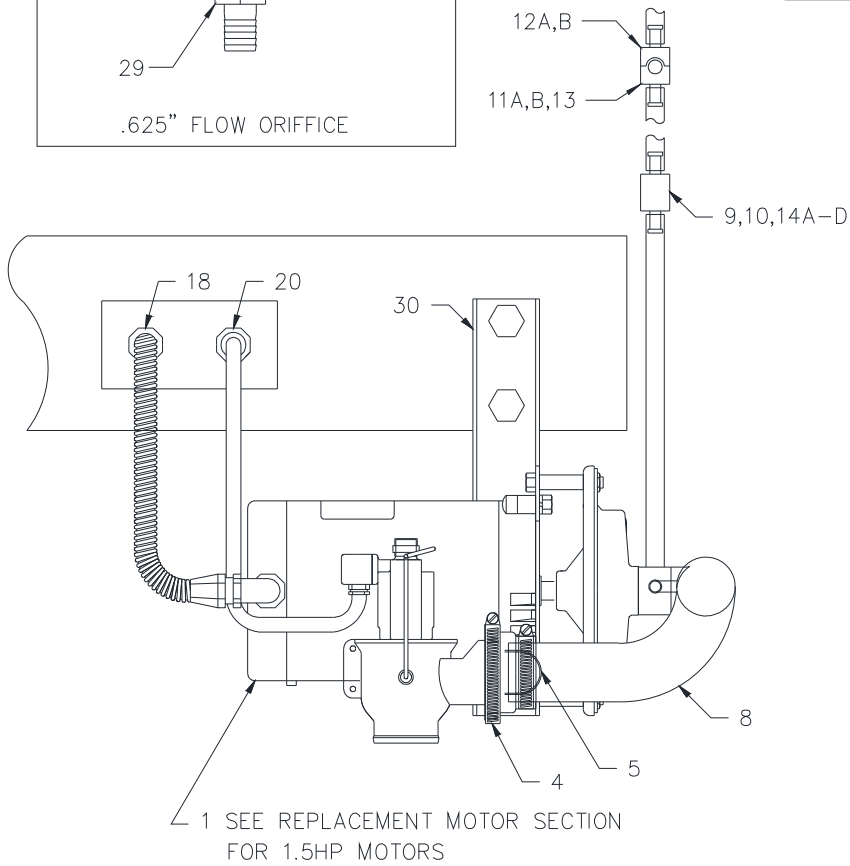
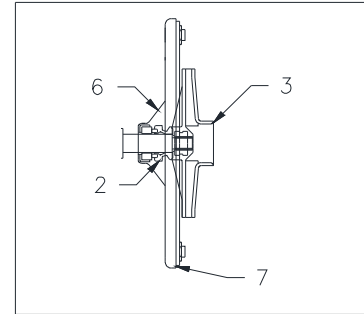
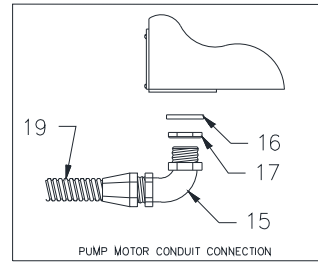
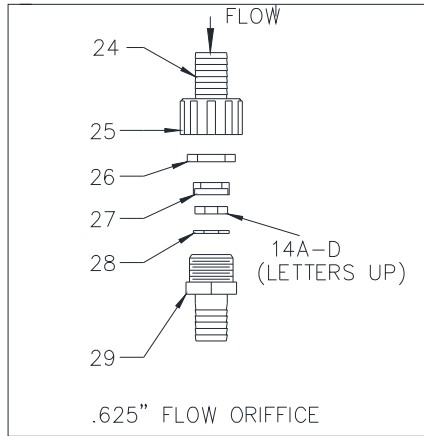
## Mueller "OHF" .75 HP Pump Assembly

REFERENCE NO.	DESCRIPTION	PART NUMBER
1	Motor, electric, .75 HP (see replacement motor section)	—
2	Housing and tube assembly, for .75 HP pump motor	8822926
3	Seal shaft, Bunna rubber and Teflon	3909
4A	Impeller, 4.25" OD, for .75 HP pump (was part # 31195 replaced by 8827000)	8827000
4B	Impeller, 4.25" OD, Radel 5000 (for .75 HP pump)	8827000
5	Bracket, pump mounting, 304 S/S	8823048
6	Seal retainer housing, Celcon	8822415
7	Gasket, pump housing, 6.625" OD (for .75 HP pump)	30690
8	Cap screw, .375" x 16 NC x 2.5", 18-8 S/S	8800248
9	Washer, lock, .375" split, S/S	30535
10	Hose, 2.0" ID, reinforced (purchased by the inch)	8823015
11	Hose clamp, S/S, adjustable 1.813" - 2.75"	3881
12	Switch, pressure, 1" water column - .036 psi (kit 8824384 converts NPT to hose barb)	N/A
13	Gasket, seat	8823275
14	O-ring, FDA approved, .139" dia X .984" ID (package of 6)	91863
15	Valve, float tube	8823026
16	Float ball, 70mm OD	8823027
17	Screen, float tube, 304 S/S	8823033
18	Hose, .5" ID, .813" OD, vinyl	8823070
19	Diverter assembly	8824500
20	Elbow, rubber hose, 1" ID, 90°	8824515
21	Screen diverter tube assembly	8824517
22	Closure, plastic, 2" (includes item no. 30, silicone gasket)	8824668
23	Adapter, rubber outlet ferrule, 2" slip x 2" ferrule. was part # 30419	8826926
24	Screen, drain valve, 304 S/S	8823058
25	Elbow, rubber, 2" x 90°, with hose clamps	8823076
26	Elbow, 90°, FDA rubber, 1.125" ID x 1" ID x .1875" wall thickness	8823884
27	Hose clamp, S/S, adjustable 1.06" - 2"	30420
28	Valve, drain (see electric drain valve section)	—
29	Kit Replacement Screws with Receptacle for "OHF" Cabinet (includes 4 screws)	8825601
30*	Gasket, Silicone	8825102

\*Not Shown

MM 2.1B

# Mueller "CMWS" 1.5 HP with Electric Drain



DFE\_MM0003A



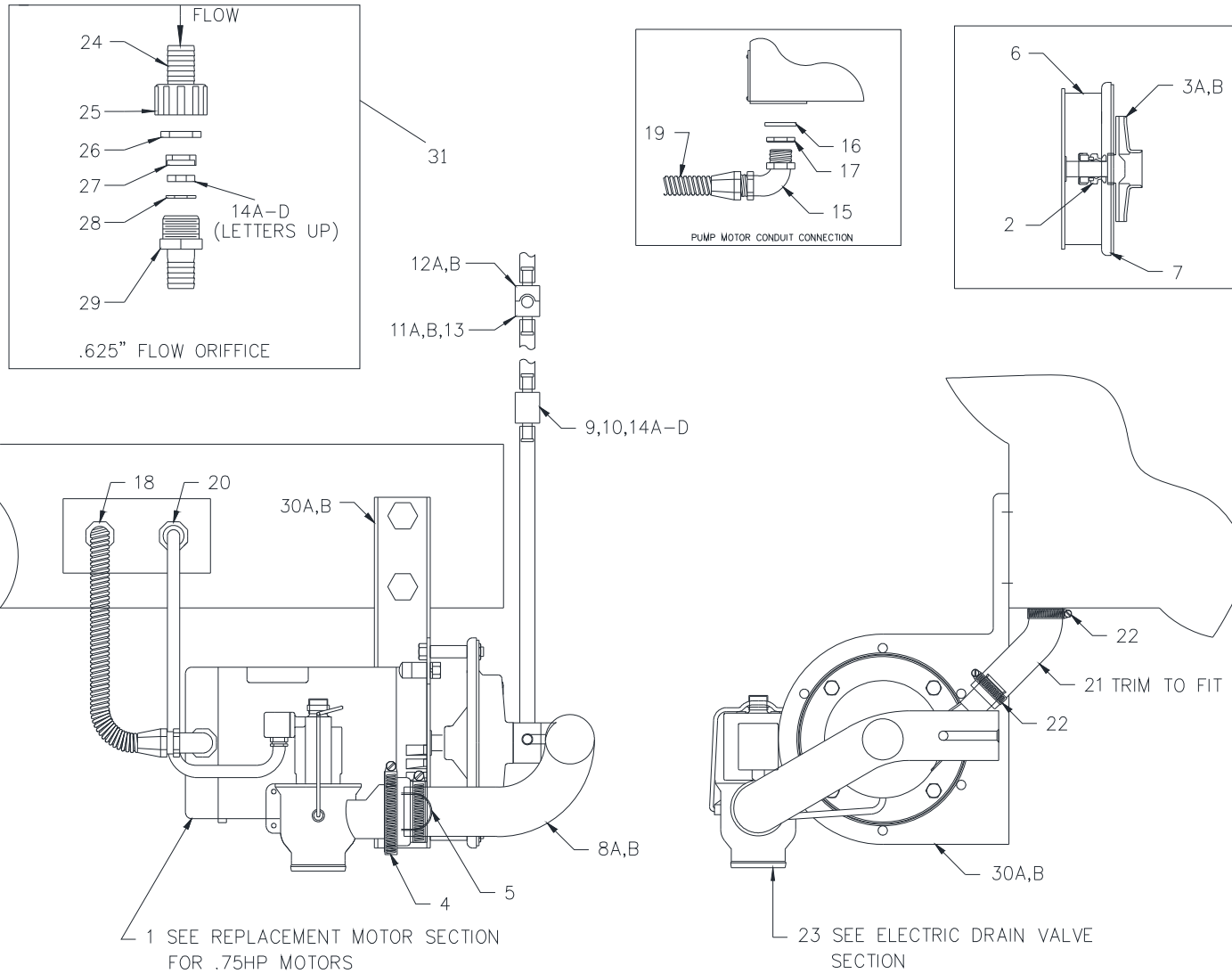
## Mueller "CMWS" 1.5 HP with Electric Drain

REFERENCE NO.	DESCRIPTION	PART NUMBER
1	Motor, electric, 1.5 HP (see replacement motor section)	—
2	Seal shaft, Bunna rubber and Teflon	3909
3	Impeller, 5" OD, Radel 5,000 (for 1.5 HP pump) (Includes Part No. 31324, O-Ring)	8826174
4	Adapter, rubber outlet ferrule, 2" slip x 2" ferrule. was part # 30419	8826926
5	Screen, drain valve	8823058
6	Seal, retainer (1.5 HP)	8822202
7	Gasket, pump housing, 8.125" OD (1.5 HP)	30691
8	Housing and tube assembly for 1.5 HP	8823678
9	Flow orifice housing assembly, .375" barb	8823023
10	Kit, flow orifice housing, replacement pin (qty 10) and O-ring (qty 5)	8823502
11A	Coupling quick-connect insert, .375" barb	8823243
11B	Coupling quick-connect insert, .625" barb	8824700
12A	Coupling quick-connect body, .375" barb	8823626
12B	Coupling quick-connect body, .625" barb	8824708
13	O-ring, EPDM (for coupling insert 11A and 11B)	8824443
14A	Orifice, flow, 2.6 gpm (HR) Letter code on orifice must face incoming water flow	8801086
14B	Orifice, flow, 3.0 gpm (HH) Letter code on orifice must face incoming water flow	8801144
14C	Orifice, flow, 4.0 gpm (FD) Letter code on orifice must face incoming water flow	8823646
14D	Orifice, flow, 7.0 gpm (BB) Letter code on orifice must face incoming water flow	8824729
15	Conduit,connector, .375", 90°	8823232
16	Washer, neoprene	8820593
17	Nut, lock, conduit, .5" nylon	8822085
18	Connector, conduit, .375" straight	8823233
19	Conduit, flex, .375", liquid tight (sold by the foot)	8823337
20	Cord, grip, .25"-.375"	505263
21	Elbow, rubber, 45°, 1" ID x 1.375" OD	8823231
22	Clamp hose, stainless steel	30420
23	Valve, drain (see electric drain valve section)	
24	Stem, hose, .625"	8824761
25	Nut, .75"	8824760
26	Washer, neoprene, high temp	3975
27	Housing, flow orifice	8824725
28	Housing cover, flow orifice	8824726
29	Adapter, .75" x .625" hose	8824733
30	Bracket, pump mounting, .75 and 1.5 HP (800-8,000)	N/A
31*	O-ring #31324, FDA approved (For Part No. 8826174, 5" OD Impeller) sold qty. of 6	8801960
32	Kit, Flow Control (includes 4.0 and 7.0 Gpm Flow Orifice)	8825773

\* Not Shown

MM 3.1B

# Mueller "CMWS" .75 HP with Electric Drain



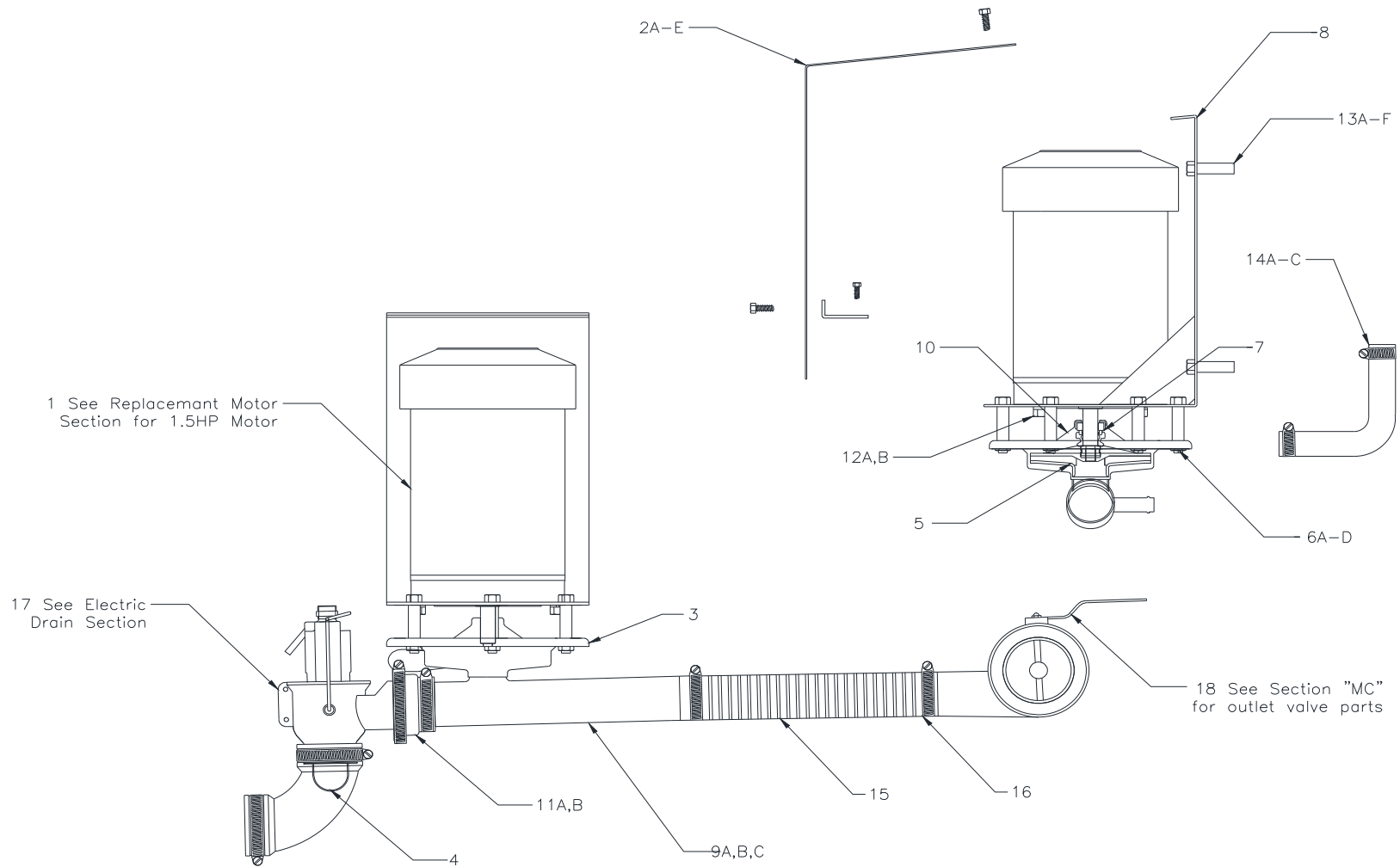
DFE\_MM0004A

## Mueller "CMWS" .75 HP with Electric Drain

REFERENCE NO.	DESCRIPTION	PART NUMBER
1	Motor, electric, .75 HP (see replacement motor section)	
2	Seal shaft, Bunna rubber and Teflon	3909
3A	Impeller, 4.25" OD, for .75 HP pump (Was part # 3195, Replaced by 8827000)	8827000
3B	Impeller, 4.25" OD, Radel 5000 (for .75 HP pump)	8827000
4	Adapter, rubber outlet ferrule, 2" slip x 2" ferrule. was part # 30419	8826926
5	Screen, drain valve	8823058
6	Seal, retainer (.75 HP)	8822415
7	Gasket, pump housing, 6.625" od (.75 HP)	30690
8A	Housing and tube assembly, .75 HP (300-600 only)	N/A
8B	Housing and tube assembly, .75 HP	N/A
9	Flow orifice housing assembly, .375" barb	8823023
10	Kit, flow orifice housing, replacement pin (qty 10) and O-ring (qty 5)	8823502
11A	Coupling quick-connect insert, .375" barb	8823243
11B	Coupling quick-connect insert, .625" barb	8824700
12A	Coupling quick-connect body, .375" barb	8823626
12B	Coupling quick-connect body, .625" barb	8824708
13	O-ring, EPDM (for coupling insert 11A and 11B)	8824443
14A	Orifice, flow, 2.6 gpm (HR) Letter code on orifice must face incoming water flow	8801086
14B	Orifice, flow, 3.0 gpm (HH) Letter code on orifice must face incoming water flow	8801144
14C	Orifice, flow, 4.0 gpm (FD) Letter code on orifice must face incoming water flow	8823646
14D	Orifice, flow, 7.0 gpm (BB) Letter code on orifice must face incoming water flow	8824729
15	Conduit,connector, .375", 90°	8823232
16	Washer, neoprene	8820593
17	Nut, lock, conduit, .5" nylon	8822085
18	Connector, conduit, .375" straight	8823233
19	Conduit, flex, .375", liquid tight (sold by the foot)	8823337
20	Cord, grip, .25"-.375"	505263
21	Elbow, rubber, 45°, 1" ID x 1.375" OD	8823231
22	Clamp hose, stainless steel	30420
23	Valve, drain (see electric drain valve section)	—
24	Stem, hose, .625"	8824761
25	Nut, .75"	8824760
26	Washer, neoprene, high temp	3975
27	Housing, flow orifice	8824725
28	Housing cover, flow orifice	8824726
29	Adapter, .75" x .625" hose	8824733
30A	Bracket, pump mounting, .75 HP (300-600 only)	N/A
30B	Bracket, pump mounting, .75 (800-8,000)	N/A
31	Kit, Flow Control (includes 4.0 and 7.0 Gpm Flow Orifice)	8825773

MM 4.1B

# Mueller 1.5 HP Front Mount Pump Assembly



DFE\_MM0018

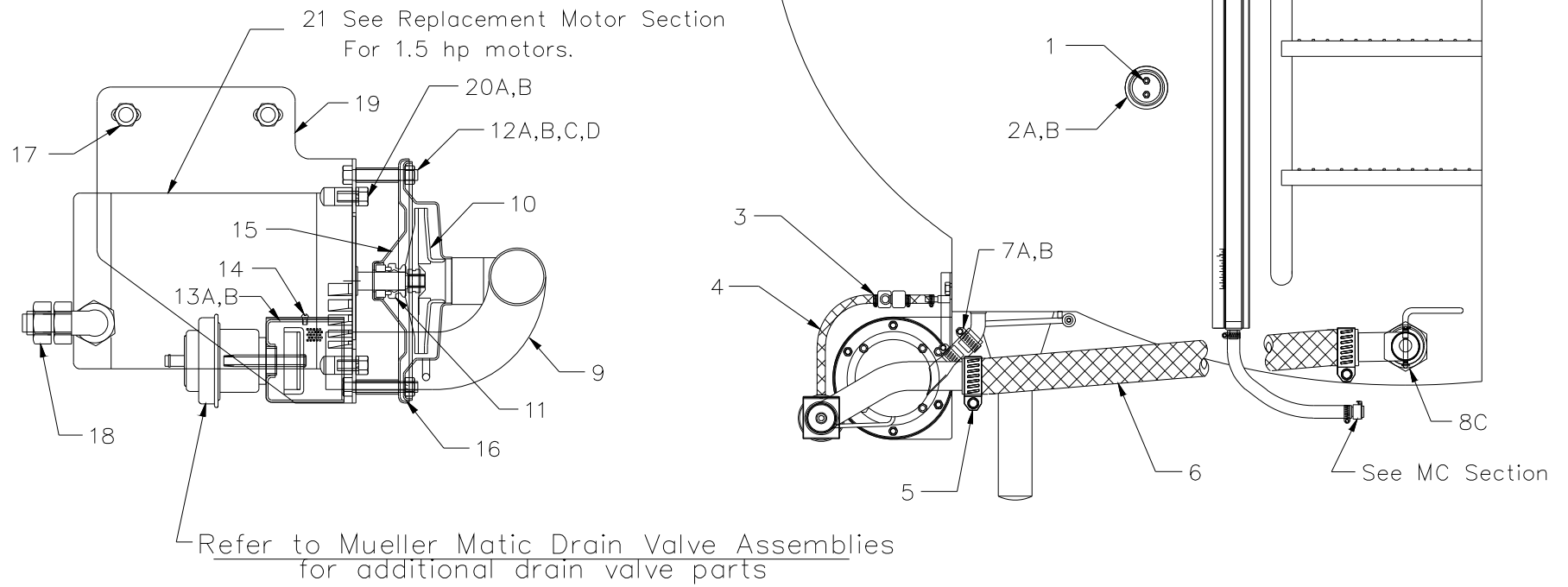
## Mueller 1.5 HP Front Mount Pump Assembly

REFERENCE NO.	DESCRIPTION	PART NUMBER
1	Motor, electric, 1.5 HP (see replacement motor section)	-
2A	Cover assembly, front mount pump, includes items 2B through 2E	8825743
2B	Cover, front mount pump	8825651
2C	Bracket, cover, front mount pump	8825650
2D	Cap screw, .25" x 20 NC x .5", 18-8 S/S (5 required)	3200074
2E	Washer, lock, .25" split, S/S (5 required)	8806612
3	Gasket, pump housing, 8.125" OD (for 1.5 HP pump)	30691
4	Screen, drain valve, 304 S/S	8823058
5	Impeller, 5" OD, Radel 5,000 (for 1.5 HP pump) (Includes Part No. 31324, O-Ring)	8826174
6A	Cap screw, .375" x 16 NC x 2.5", 18-8 S/S (6 required)	8800248
6B	Spacer tube, .5" OD x 1.5" LG, S/S (6 required)	8822204
6C	Washer, lock, .375" split, S/S (6 required)	30535
6D	Nut, hex, .375" x 16 NC, 18-8 S/S (6 required)	30532
7	Seal shaft, Bunna rubber and Teflon	3909
8	Bracket, pump mounting, 304 S/S	8825677
9A	Housing and tube assembly, for 1.5 HP pump motor, without external sight glass	8825734
9B	Housing and tube assembly, for 1.5 HP pump motor, with external sight glass, old style quick connect	8825662
9C	Housing and tube assembly, for 1.5 HP pump motor, with external sight glass, new style quick connect	8826300
10	Seal retainer housing, S/S	8822202
11A	Adapter, rubber outlet ferrule, 2" slip x 2" ferrule. was part # 30419	8826926
11B	Hose clamp, S/S, adjustable 1.813" - 2.75"	3881
12A	Cap screw, .375" x 16 NC x .75", 18-8 S/S	30529
12B	Washer, lock, .375" split, S/S	30535
13A	Cap screw, .375" x 16 NC x 1.25", 18-8 S/S	3200011
13B	Cap screw, .375" x 16 NC x 2.00", 18-8 S/S	3200013
13C	Washer, lock, .375" split, S/S	30535
13D	Washer, flat, .375", S/S	3200039
13E	Spacer 0.75" OD x 0.75" LG, nylatron, for upper mounting bolts	8823256
13F	Spacer 0.75" OD x 1.25" LG, nylatron, for lower mounting bolts	8823258
14A	Elbow, 90°, FDA rubber, 1.125" ID x 1" ID x 0.1875" wall thickness, with internal CIP	8823884
14B	Elbow, 90°, FDA rubber, 1.250" ID x 1" ID x 0.1875" wall thickness, with external CIP	N/A
14C	Hose clamp, S/S, adjustable 1.06" - 2.00"	30420
15	Hose, 2.0" reinforced (purchased by the inch)	8823015
16	Hose clamp, S/S, adjustable 1.813" - 2.75"	3881
17	Valve, drain (see electric drain valve section)	-
18	See Section "MC" for Outlet Valve Parts	-
19*	O-ring #31324, FDA approved (For Part No. 8826174, 5" OD Impeller) sold qty. of 6	8801960

\* Not Shown

MM 5.1B

# Mueller Cooler-Mounted Washer, 1.5 HP



DFE\_MM0005

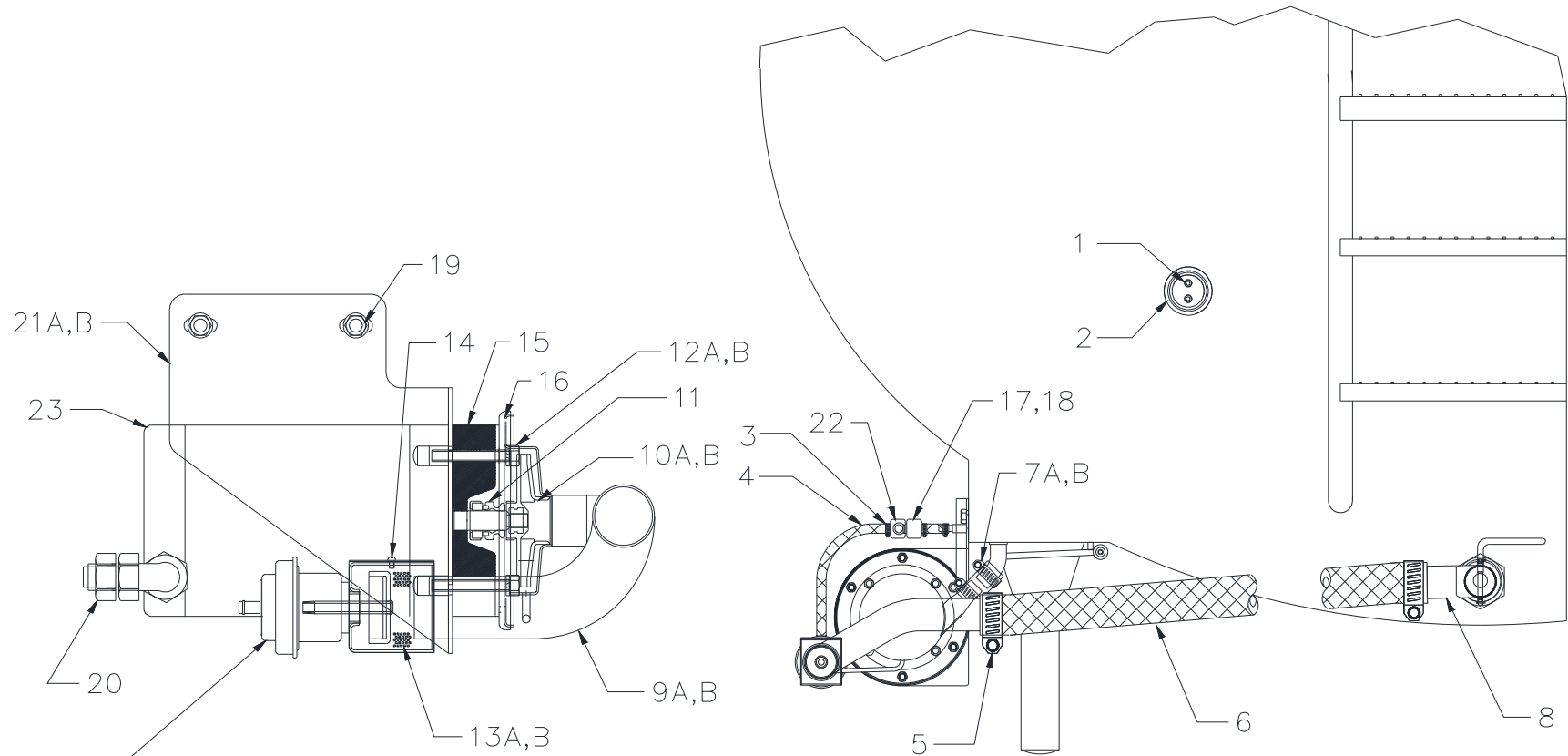
## Mueller Cooler-Mounted Washer, 1.5 HP

REFERENCE NO.	DESCRIPTION	PART NUMBER
1	Screw, cap, .25" x .5" x 20 NC, 18-8 stainless steel	3200074
2A	Hanger, suction line plug, 2" bevel seat	8822217
2B	Hanger, suction line plug, 3" bevel seat	8822751
3	Hose clamp, stainless steel, adjustable .313" - .875"	30423
4	Hose, .375" ID (purchased by the foot)	30581
5	Hose clamp, stainless steel, adjustable 1.83" - 2.75"	3881
6	Hose, 2.0" ID, reinforced (purchased by the inch)	8823015
7A	Hose, 1" ID, vinyl reinforced (purchased by the inch)	N/A
7B	Hose clamp, stainless steel, adjustable 1.06" - 2"	30420
8A	Elbow, 304 stainless steel, 2" weld x bevel seat, 90 degree (includes 2" stainless steel nut)	8822340
8B	Elbow, 304 stainless steel, 2" weld x 3" bevel seat, 90 degree (requires 3" stainless steel nut)	8822753
8C	Nut, hex, 3" bevel seat, 13H, 304 stainless steel	9901128
9	Housing and tube assembly, horizontal (for 1.5 HP pump motors)	N/A
10	Impeller, 5" OD, Radel 5,000 (for 1.5 HP pump) (Includes Part No. 31324, O-Ring)	8826174
11	Seal shaft, Buna rubber and S/S	3909
12A	Cap screw, .375" x 16 NC x 2.5", 18-8 stainless steel	8800248
12B	Washer, lock, .375" split, stainless steel	30535
12C	Nut, hex, .375" x 16 NC, 18-8 stainless steel	30532
12D	Spacer tube, .5" OD x 1.5" LG, stainless steel	8822204
13A	Drain valve screen, cooler-mounted wash systems	N/A
13B	Drain valve screen cover, cooler-mounted wash systems	N/A
14	Screw, machine, 8-32 NC x .25", 18-8 stainless steel, pan head phillips	8806713
15	Seal retainer housing, stainless steel, for cooler-mounted wash systems with 1.5 HP pump assembly	8822202
16	Gasket, pump housing, 8.125" OD (727 models)	30691
17	Nut, hex, .375" x 16 NC, 18-8 stainless steel	30532
18	Cord grip, .375" - .5" x .5" MPT, nylon, 90 degree, with lock nut	8822426
19	Bracket, pump mounting, 800 - 8,000 gallon coolers with cooler-mounted wash system	N/A
20A	Cap screw, .375" x 16 NC x .75", 18-8 stainless steel	30529
20B	Washer, lock, .375" split, stainless steel	30535
21	Motor, electric, 1.5 HP (see replacement motor section)	—
22*	O-ring #31324, FDA approved (For Part No. 8826174, 5" OD Impeller) sold qty. of 6	8801960

\* Not Shown

MM 6.1B

# Mueller Cooler-Mounted Washer, .75 HP



Refer to Mueller Matic Drain Valve Assemblies  
for additional drain valve parts

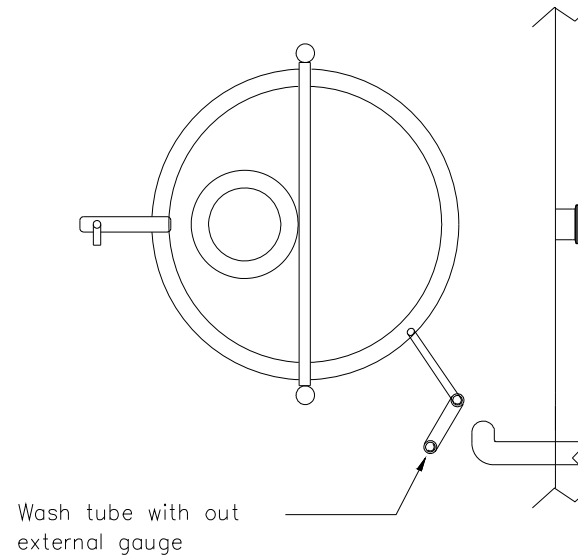
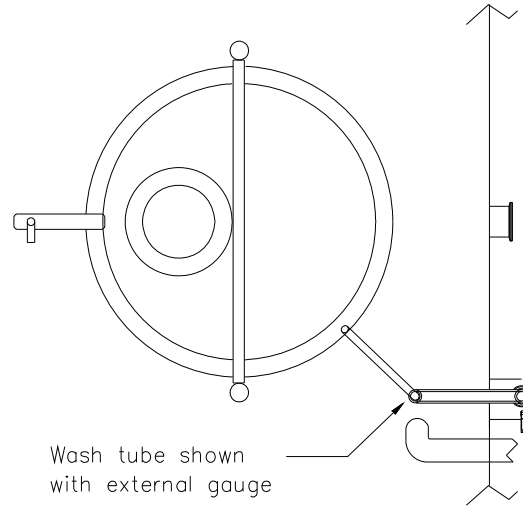
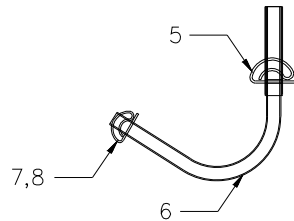
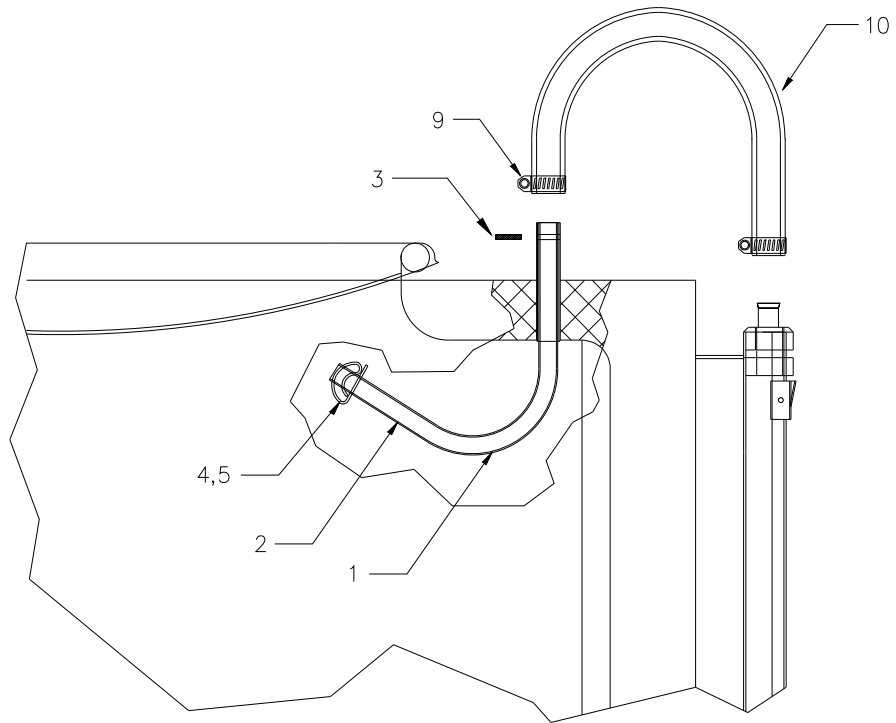
DFE\_MM0006



## Mueller Cooler-Mounted Washer, .75 HP

REFERENCE NO.	DESCRIPTION	PART NUMBER
1	Screw, cap, .25" x .5" x 20 NC, 18-8 stainless steel	3200074
2	Hanger, suction line plug, 2" bevel seat	8822217
3	Hose clamp, stainless steel, adjustable .313" - .875"	30423
4	Hose, .375" ID (purchased by the foot)	30581
5	Hose clamp, stainless steel, adjustable 1.83" - 2.75"	3881
6	Hose, 2.0" ID, reinforced (purchased by the inch)	8823015
7A	Hose, 1" ID, vinyl reinforced (purchased by the inch)	N/A
7B	Hose clamp, stainless steel, adjustable 1.06" - 2"	30420
8	Elbow, 304 stainless steel, 2" weld x bevel seat, 90 degree	8822340
9A	Housing and tube assembly, horizontal, 300 - 600 gallon coolers with cooler-mounted washer	N/A
9B	Housing and tube assembly, horizontal, 800 - 1,600 gallon coolers with cooler-mounted washer	N/A
10A	Impeller, 4.25" OD, 326 models (Was part # 31195, Replaced by 8827000)	8827000
10B	Impeller, 4.25" OD, Radel 5000 (326 models)	8827000
11	Seal shaft, Buna rubber and S/S	3909
12A	Cap screw, .375" x 16 NC x 2.5", 18-8 stainless steel	8800248
12B	Washer, lock, .375" split, stainless steel	30535
13A	Drain valve screen, cooler-mounted wash systems	N/A
13B	Drain valve screen cover, cooler-mounted wash systems	N/A
14	Screw, machine, 8-32 NC x .25", 18-8 stainless steel, pan head phillips	8806713
15	Seal retainer housing, Celcon, for cooler-mounted wash systems with .75 HP pump assembly	8822415
16	Gasket, pump housing, 6.25" OD (76 and 326 models)	30690
17	Coupling, quick connect insert, male	8823243
18	Coupling, quick connect body, female	8823626
19	Nut, hex, .375" x 16 NC, 18-8 stainless steel	30532
20	Cord grip, .375" - .5" x .5" MPT, nylon, 90 degree, with lock nut	8822426
21A	Bracket, pump mounting, 300 - 600 gallon coolers with cooler-mounted wash system	N/A
21B	Bracket, pump mounting, 800 - 8,000 gallon coolers with cooler-mounted wash system	N/A
22	O-ring, for quick connect (item 17)	8824443
23	Motor, electric, .75 HP (see replacement motor section)	—

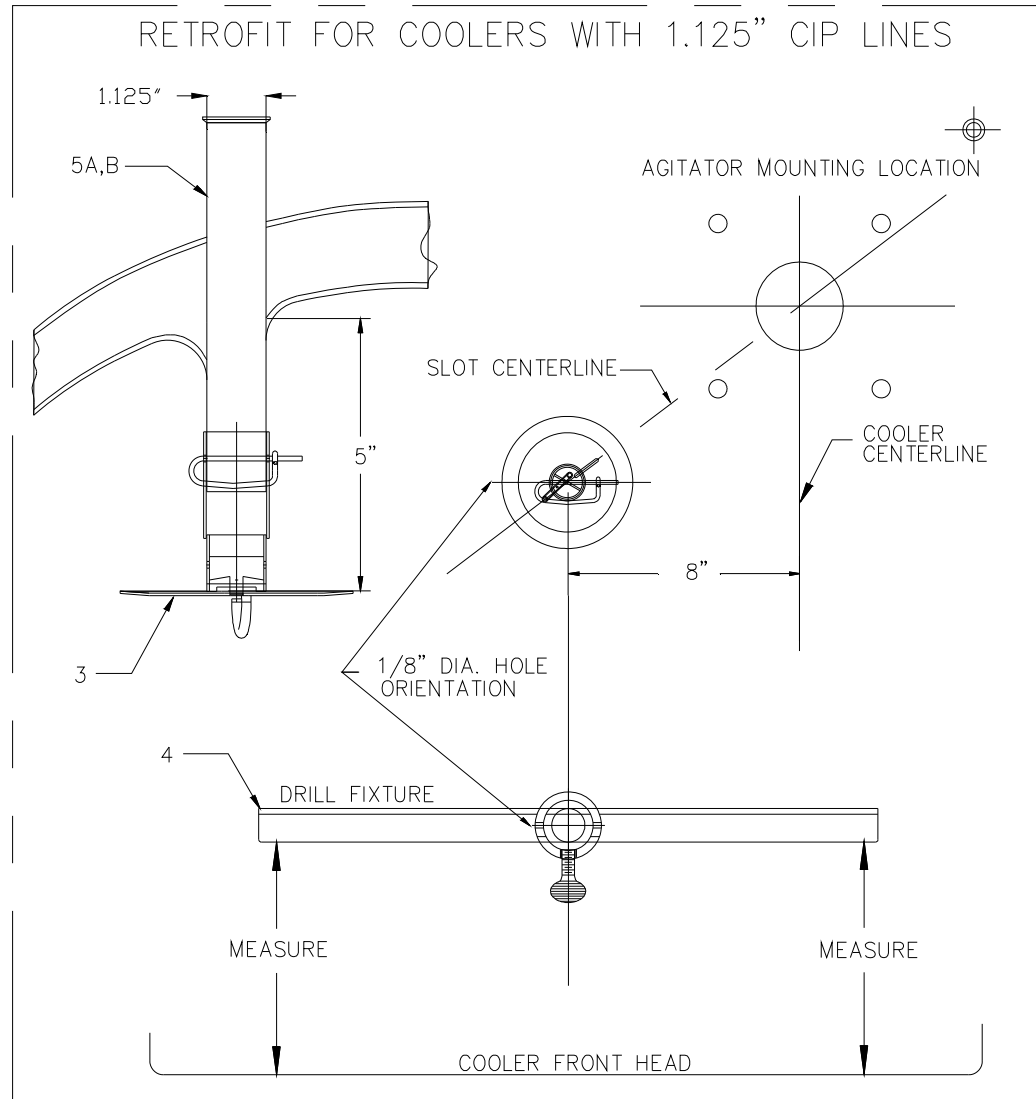
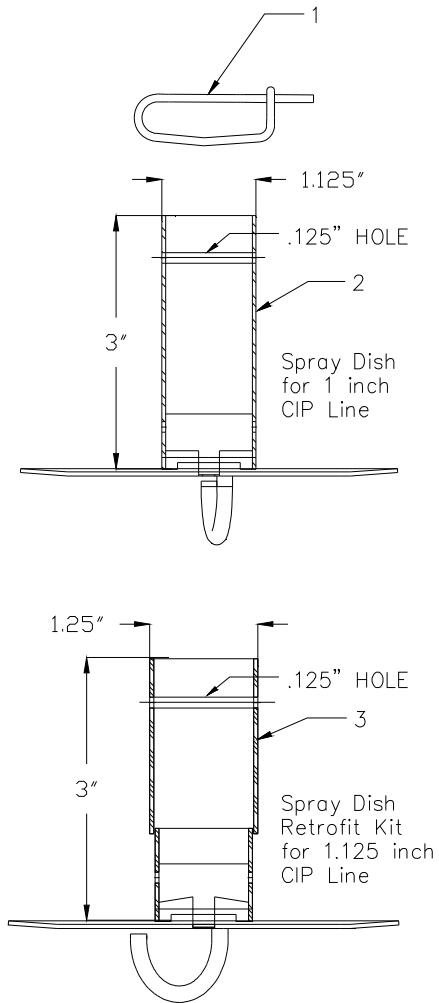
# Mueller Manway Wash Tube



DFE\_MM0007A



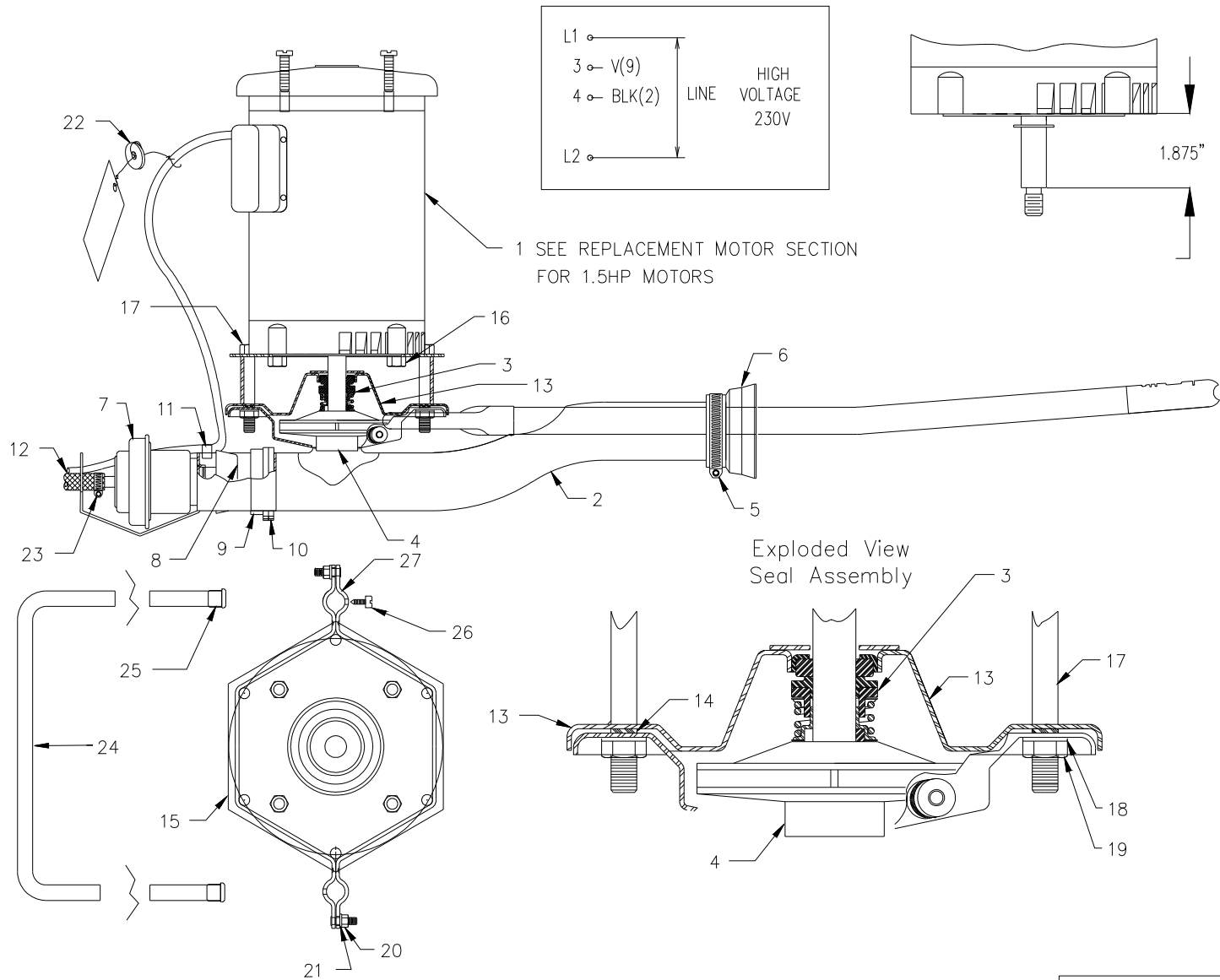
# Mueller Spray Dish Components



DFE\_MM0008



# Mueller Matic 727 Jet-Tube Pump Assembly, 1.5 HP



DFE\_MM0009

MM 10.1A

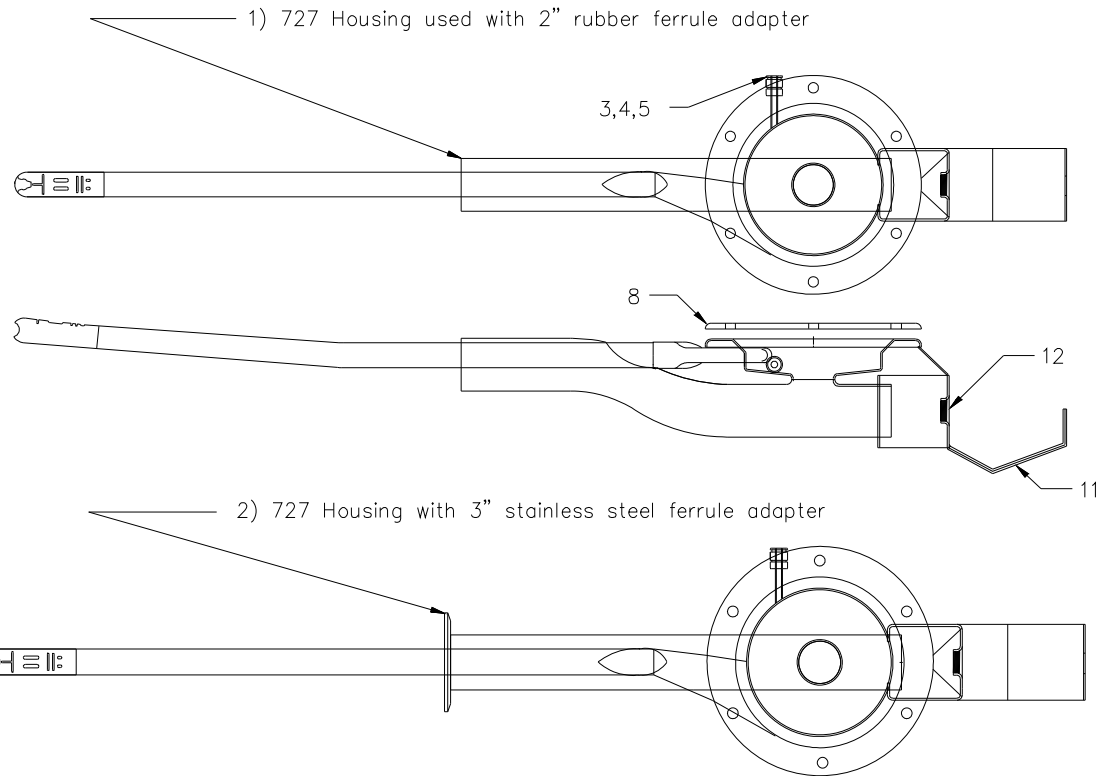
## Mueller Matic 727 Jet-Tube Pump Assembly, 1.5 HP

REFERENCE NO.	DESCRIPTION	PART NUMBER
1	Motor, electric, 1.5 HP (see replacement motor section)	—
2	Housing and tube assembly, 727 jet-tube with spray nozzle and Q-C gauge fitting	8804802
3	Seal shaft, Buna rubber and Teflon	3909
4	Impeller, 5" OD, Radel 5,000 (for 1.5 HP pump) (Includes Part No. 31324, O-Ring)	8826174
5	Hose clamp, stainless steel, adjustable 1.83" - 2.75"	3881
6	Adapter, rubber outlet ferrule, 2" slip x 2" ferrule	30419
7	Auto drain valve assembly with 2.0 gpm orifice	92860
8	Plug, drain valve, 2"	30452
9	Gasket, drain valve, 2"	30145
10	Tie band for drain valve gasket, 4" diameter	30408
11	Clamp, cable, Tinnerman (all models)	8802673
12	Wire and hose assembly (includes hose, clamps, and 16/3 SJT wire)	N/A
13	Housing assembly, seal retainer, 1.5 hp	8822202
14	Gasket, pump housing, 8.125" OD (727 models)	30691
15	Adapter, plate hexagon (727 models)	21249
16	Cap screw, .375" x 16 NC x .75", 18-8 stainless steel	30529
17	Cap screw, .375" x 16 NC x 2.5", 18-8 stainless steel	8800248
18	Washer, lock, .375" split, stainless steel	30535
19	Nut, hex, .375" x 16 NC, 18-8 stainless steel	30532
20	Nut, hex, .25" x 20 NC, 18-8 stainless steel (replaces Part No. 30533)	30623
21	Washer, lock, .25" split, stainless steel	3200264
22	Orifice, flow control, 2.6 gpm (code HR)	8801086
23	Hose, clamp, stainless steel, adjustable, .313" - .875"	30423
24	Leg and handle assembly (727 models)	21257
25	Rubber leg cap (package of 6)	8801964
26	Leg screw kit, 8-32 NC (includes high-speed drill bit and 2 screws)	N/A
27	Retainer, leg and spacer assembly, stainless steel	9813
28*	O-ring #31324, FDA approved (For Part No. 8826174, 5" OD Impeller) sold qty. of 6	8801960

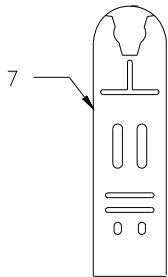
\* Not Shown

MM 10.1B

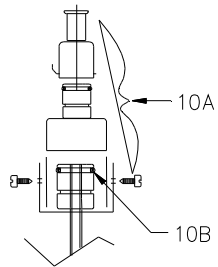
# Mueller Matic 727 Jet-Tube Housing Assembly



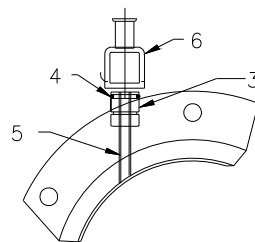
727 Nozzle,  
2,000–6,000  
Gallon Coolers



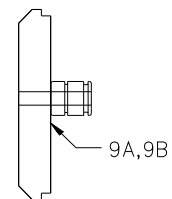
Quick Connect  
3/4" Adapter Kit  
For Old Model



Quick Connect  
5/8" Assembly  
Current Model



Quick Connect  
To Valve Adapter  
2" or 3"



DFE\_MM0010

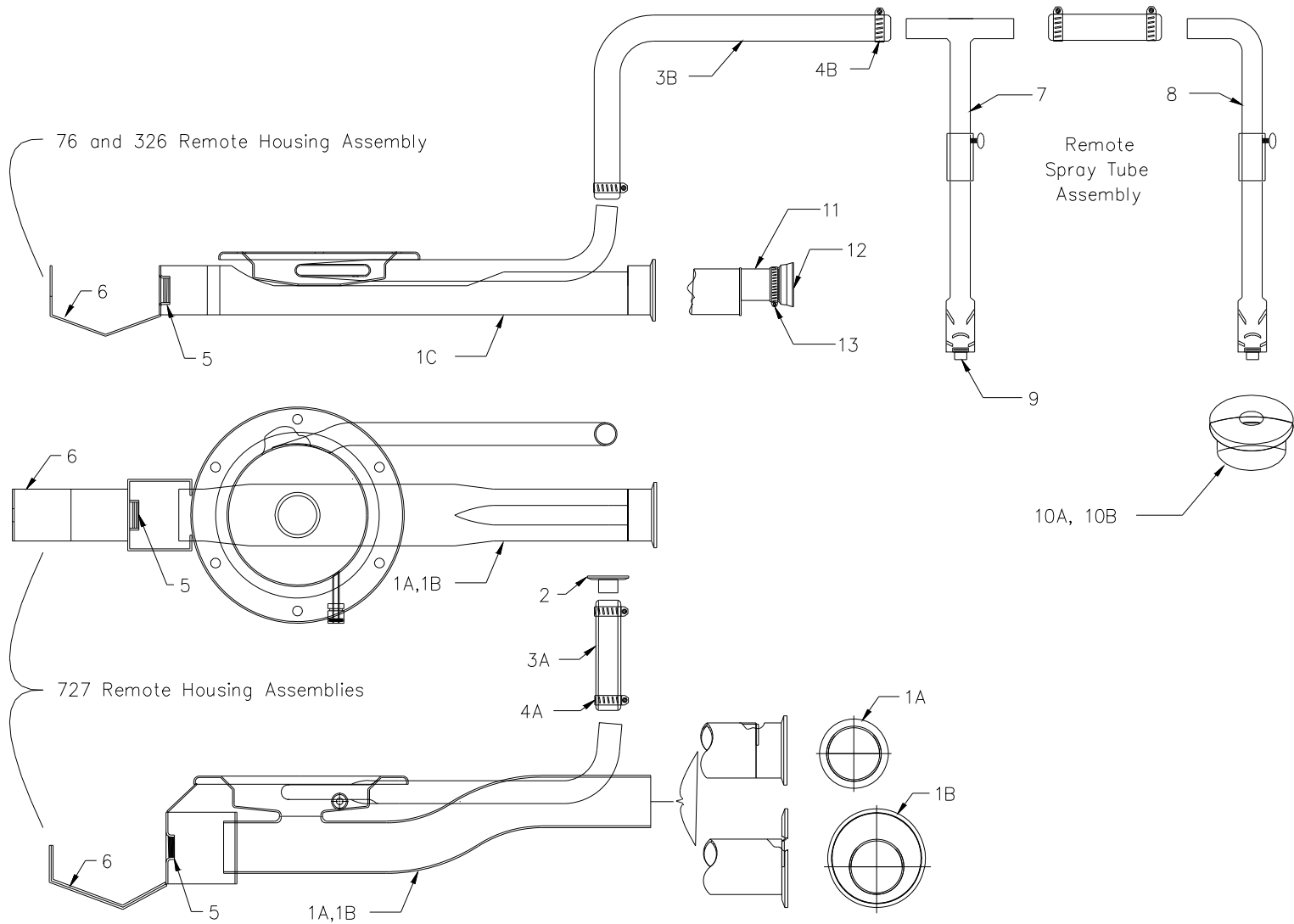
MM 11.1A



# Mueller Matic 727 Jet-Tube Housing Assembly

REFERENCE NO.	DESCRIPTION	PART NUMBER
1	Housing and tube assembly, 727 jet-tube with spray nozzle and Q-C gauge fitting	8804802
2	Housing and tube assembly, 727 jet-tube with spray nozzle, Q-C, 3" stainless steel ferrule	8820697
3	Quick connect, stainless steel, male pump fitting (requires TIG welding)	8800741
4	O-ring (for stainless steel quick connect) (package of 6)	8801962
5	Tube connector, stainless steel, quick connect (requires TIG welding)	23619
6	Quick connect, stainless steel, female assembly	8800799
7	Nozzle, casting (727 models)	31456
8	Gasket, pump housing, 8.125" OD (727 models)	30691
9A	2" valve adapter, quick connect, stainless steel	8800743
9B	3" valve adapter, quick connect, stainless steel	8800742
10A	Adapter kit (converts old style .75" Q-C to current design)	8801863
10B	O-ring (for discontinued large plastic quick connect) (package of 6)	93498
11	Bracket, stand (requires TIG welding)	8802762
12	Bracket, drain valve body, threaded (requires TIG welding)	21255

# Mueller Matic Remote Housing Assemblies



DFE\_MM0011

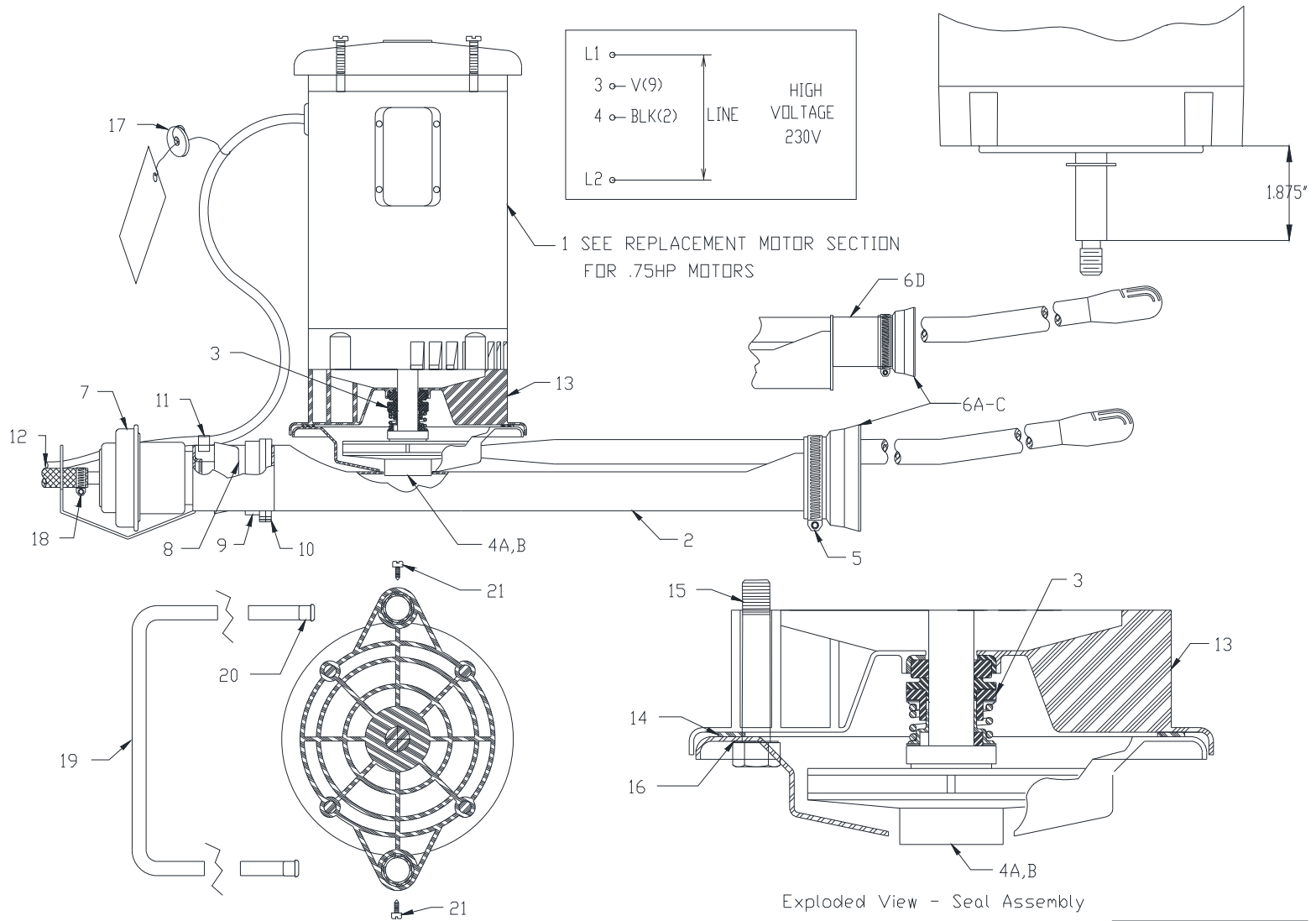
MM 12.1A

## Mueller Matic Remote Housing Assemblies

REFERENCE NO.	DESCRIPTION	PART NUMBER
1A	Housing assembly, 727 remote with 2" stainless steel ferrule connection and quick connect	8822064
1B	Housing assembly, 727 remote with 3" stainless steel ferrule connection and quick connect	8822065
1C	Housing assembly, 76 and 326 remote with 2" stainless steel ferrule connection (no quick connect)	8802770
2	1.5" x 1" stainless steel ferrule assembly, hose to spray dish CIP line connection	8805246
3A	Hose, .875" ID x 1.375" OD, vinyl (sold by the foot)	8805258
3B	Hose, 0.75" ID x 1.125" OD, rubber (sold by the foot)	N/A
4A	Hose clamp, stainless steel, 1.312" - 2.25" (was part # 31191)	N/A
4B	Hose clamp, stainless steel, 0.75" - 1.25"	30041
5	Bracket, drain valve body, threaded (requires TIG welding)	21255
6	Bracket, stand (requires TIG welding)	8802762
7	Remote spray tube assembly ("T" for dual)	N/A
8	Remote spray tube assembly ("Elbow" for single)	N/A
9	Drain plug (1 per pkg.)	21940
10A	Rubber inlet adapter, 1.8152" ID opening	3372
10B	Rubber inlet adapter, 2.4375" ID opening	N/A
11	Adapter, stainless steel, 2" butt weld x 1.5" OD nipple (requires TIG welding)	8803086
12	Adapter, rubber outlet ferrule, 1.5" slip x 1.5" ferrule	30417
13	Hose clamp, stainless steel, adjustable 1.83" - 2.75"	3881

MM 12.1B

# Mueller Matic 326 Jet-Tube Pump Assembly, .75 HP

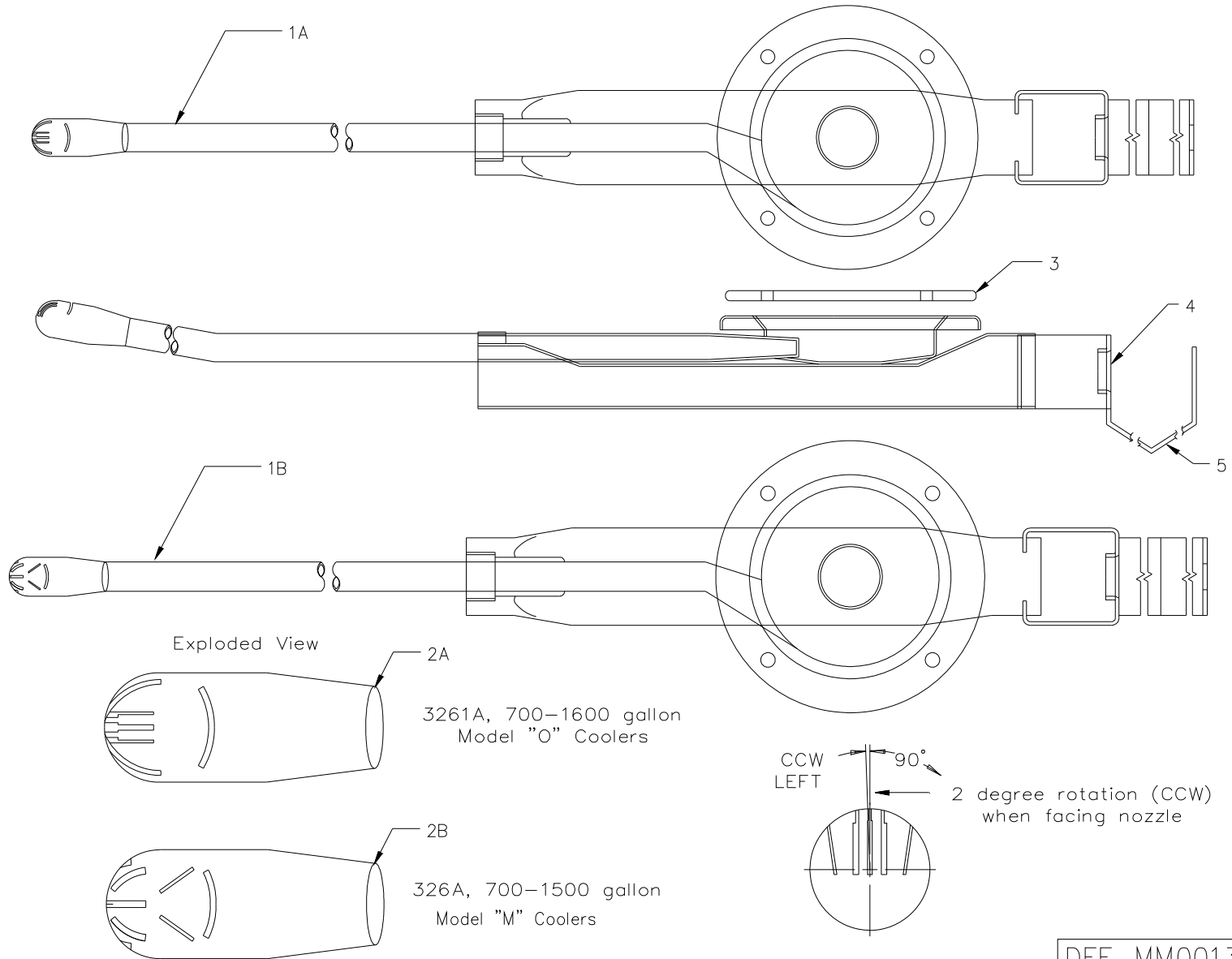


DFE\_MM0012

## Mueller Matic 326 Jet-Tube Pump Assembly, .75 HP

REFERENCE NO.	DESCRIPTION	PART NUMBER
1	Motor, electric, .75 HP (see replacement motor section)	—
2	Housing and tube assembly, 326 jet-tube with spray nozzle for 700-1600 Model "O" coolers	8802767
3	Seal shaft, Buna rubber and S/S	3909
4A	Impeller, 4.25" OD, 326 models (Was part # 31195, Replaced by 8827000)	8827000
4B	Impeller, 4.25" OD, Radell 5000 (326 models)	8827000
5	Hose clamp, stainless steel, adjustable 1.83" - 2.75"	3881
6A	Adapter, rubber outlet ferrule, 2" slip x 2" ferrule	30419
6B	Adapter, rubber outlet ferrule, 1.5" slip x 2" ferrule	30418
6C	Adapter, rubber outlet ferrule, 1.5" slip x 1.5" ferrule	30417
6D	Adapter, stainless steel, 2" butt weld x 1.5" OD nipple (requires TIG welding)	8803086
7	Auto drain valve assembly with 1.5 gpm orifice	92848
8	Plug, drain valve, 2"	30452
9	Gasket, drain valve, 2"	30145
10	Tie band for drain valve gasket, 4" diameter	30408
11	Clamp, cable, Tinnerman (all models)	8802673
12	Wire and hose assembly (includes hose, clamps, and 16/3 SJT wire)	N/A
13	Housing assembly, seal retainer, and leg spacer (326 models)	31263
14	Gasket, pump housing, 6.25" OD (76 and 326 models)	30690
15	Cap screw, .375" x 16 NC x 2.5", 18-8 stainless steel	8800248
16	Washer, lock, .375" split, stainless steel	30535
17	Orifice, flow control, 2.0 gpm (code FH or HY) Note: New production is 1.8 gpm.	3859
18	Hose clamp, stainless steel, adjustable .313" - .875"	30423
19	Leg and handle assembly (76 and 326 models)	23642
20	Rubber leg cap (package of 6)	8801964
21	Leg screw kit, 8-32 NC (includes high-speed drill bit and 2 screws)	N/A

# Mueller Matic 326 Jet-Tube Housing Assembly

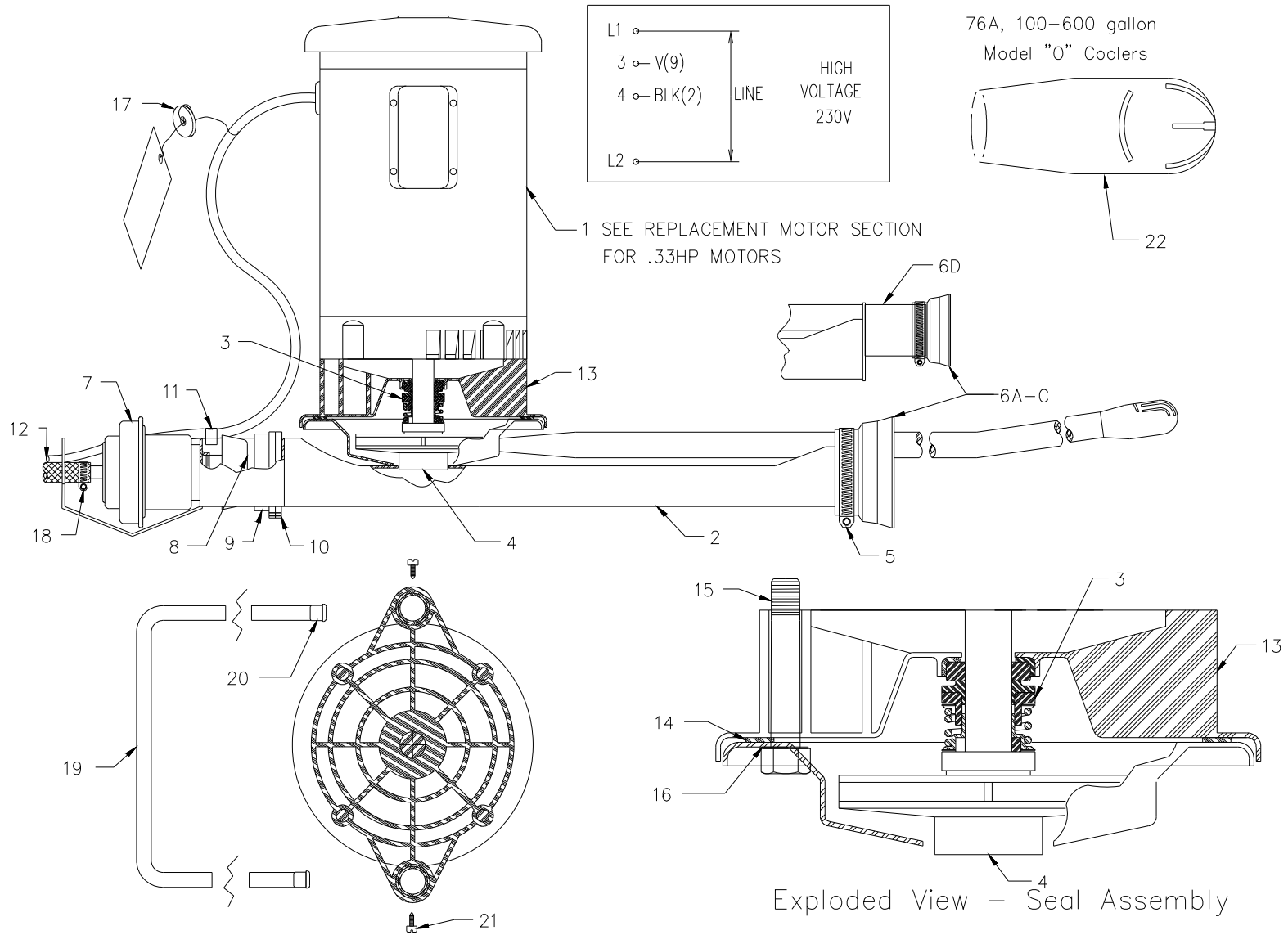


DFE\_MM0013

MM 14.1A



# Mueller Matic 76 Jet-Tube Pump Assembly, .33 HP



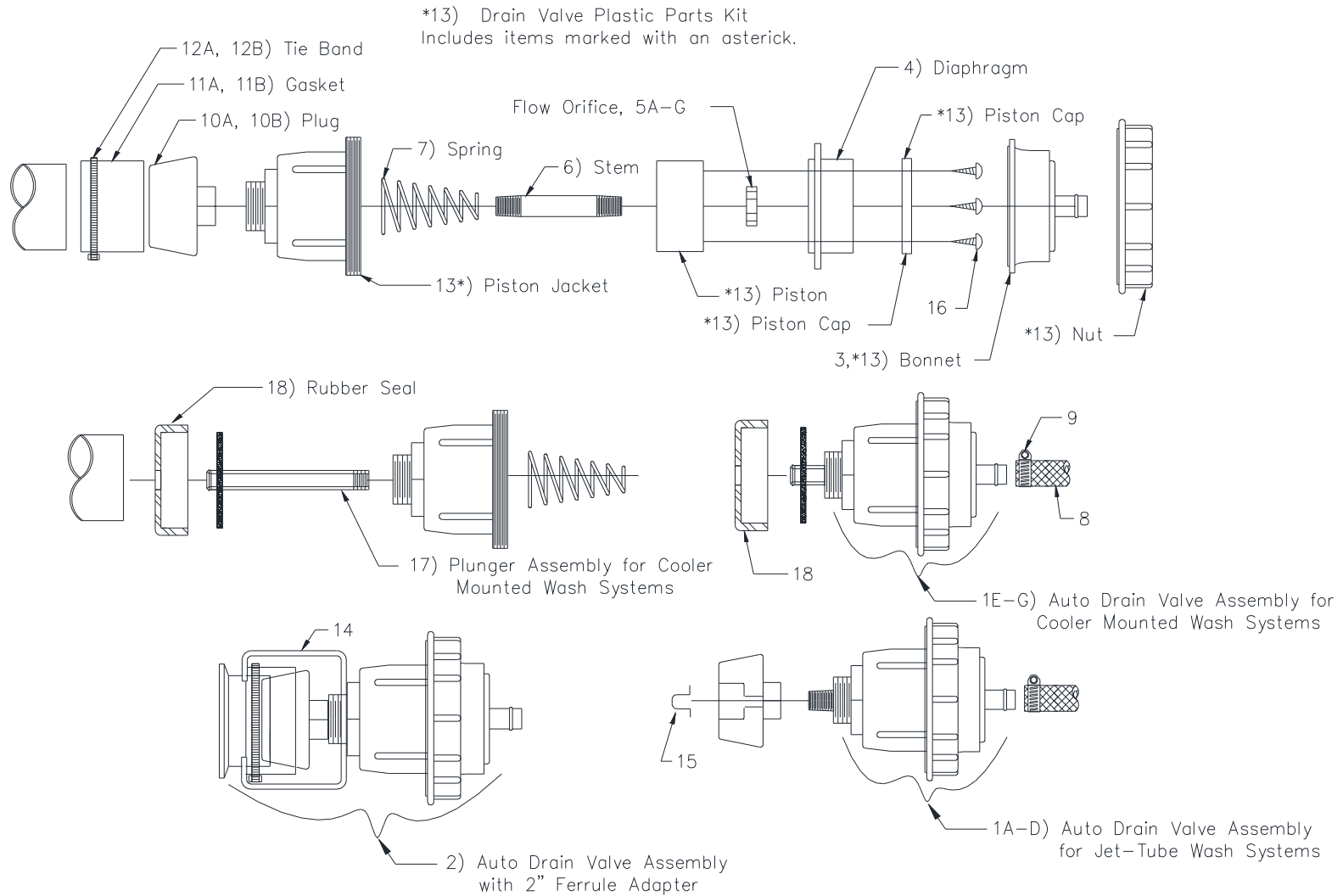
DFE\_MM0014



## Mueller Matic 76 Jet-Tube Pump Assembly, .33 HP

REFERENCE NO.	DESCRIPTION	PART NUMBER
1	Motor, electric, .33 HP (see replacement motor section)	—
2	Housing and tube assembly, 76 jet-tube with spray nozzle (was part # 8802765)	N/A
3	Seal shaft, Buna rubber and S/S	3909
4	Impeller, 3.937" OD (76 models)	31194
5	Hose clamp, stainless steel, adjustable 1.83" - 2.75"	3881
6A	Adapter, rubber outlet ferrule, 2" slip x 2" ferrule	30419
6b	Adapter, rubber outlet ferrule, 1.5" slip x 2" ferrule	30418
6C	Adapter, rubber outlet ferrule, 1.5" slip x 1.5" ferrule	30417
6D	Adapter, stainless steel, 2" butt weld x 1.5" OD nipple (requires TIG welding)	8803086
7	Auto drain valve assembly with 1.2 gpm orifice	92847
8	Plug, drain valve, 2"	30452
9	Gasket, drain valve, 2"	30145
10	Tie band for drain valve gasket, 4" diameter	30408
11	Clamp, cable, Tinnerman (all models)	8802673
12	Wire and hose assembly (includes hose, clamps, and 16/3 SJT wire)	N/A
13	Housing assembly, seal retainer, and leg spacer (326 models)	31263
14	Gasket, pump housing, 6.25" OD (76 and 326 models)	30690
15	Cap screw, .375" x 16 NC x 2.5", 18-8 stainless steel	8800248
16	Washer, lock, .375" split, stainless steel	30535
17	Orifice, flow control, 1.5 gpm (code HFV)	30568
18	Hose clamp, stainless steel, adjustable .313" - .875"	30423
19	Leg and handle assembly (76 and 326 models)	23642
20	Rubber leg cap (package of 6)	8801964
21	Leg screw kit, 8-32 NC (includes high-speed drill bit and 2 screws)	N/A
22	Nozzle, 76, casting (for 100-600 Model "O" coolers) (Was part # 30085)	N/A

# Mueller Matic Drain Valve Assemblies



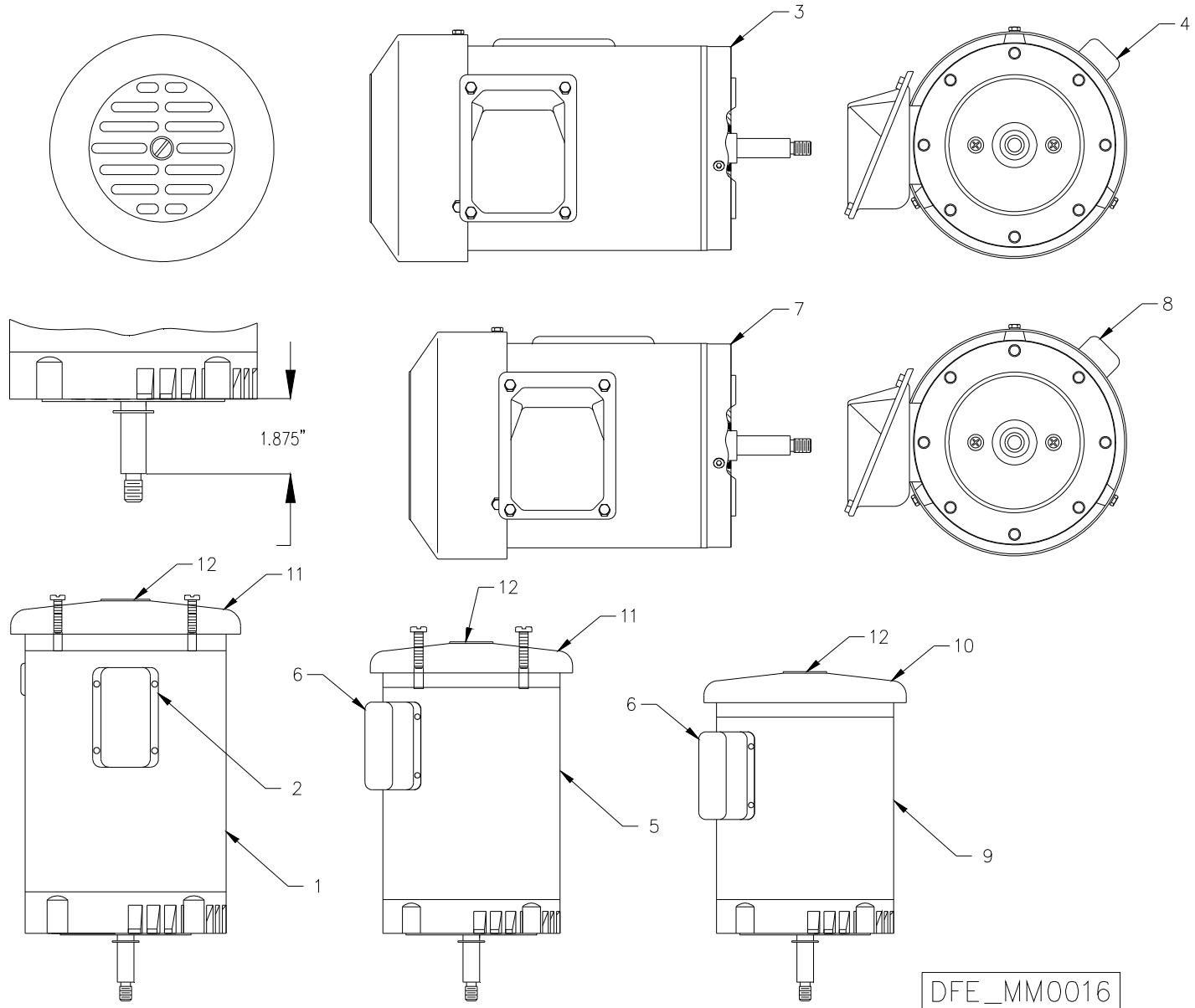
DFE\_MM0015

## Mueller Matic Drain Valve Assemblies

REFERENCE NO.	DESCRIPTION	PART NUMBER
1A	Auto drain valve assembly with 1.2 gpm orifice	92847
1B	Auto drain valve assembly with 1.5 gpm orifice	92848
1C	Auto drain valve assembly with 2.0 gpm orifice	92860
1D	Auto drain valve assembly with 3.0 gpm orifice	8801151
1E	Auto drain valve assembly with 2.6 gpm orifice and plunger assembly for cooler-mounted wash system	8822880
1F	Auto drain valve assembly with 3.0 gpm orifice and plunger assembly for cooler-mounted wash system	8822881
1G	Auto drain valve assembly with 4.0 gpm orifice and plunger assembly for cooler-mounted washers	8823742
2	Auto drain assembly with 3.0 gpm orifice and 2" stainless steel ferrule adapter assembly	8802780
3	Drain valve bonnet	30943
4	Diaphragm for drain valve piston	30945
5A	Orifice, flow control, 1.2 gpm (code AB or HN)	3726
5B	Orifice, flow control, 1.5 gpm (code HFV)	30568
5C	Orifice, flow control, 2.0 gpm (code FH or HY) Note: New production is 1.8 gpm.	3859
5D	Orifice, flow control, 2.6 gpm (code HR)	8801086
5E	Orifice, flow control, 3.0 gpm (code HH)	8801144
5F	Orifice, flow control, 4.0 gpm (code FD)	8823646
5G	Orifice, flow control, 7.0 gpm (code BB)	8824729
6	Drain valve stem (threaded)	8804316
7	Drain valve spring	30140
8	Hose, .375" ID (purchased by the foot)	30581
9	Hose clamp, stainless steel, adjustable .313" - .875"	30423
10A	Plug, drain valve, 1.5"	30314
10B	Plug, drain valve, 2"	30452
11A	Gasket, drain valve, 1.5"	30144
11B	Gasket, drain valve, 2"	30145
12A	Kit, tie band for drain valve gasket, 1.5" (was part # 8801963)	N/A
12B	Kit, tie band for drain valve gasket, 2.0" (was part # 8801965)	N/A
13	Drain valve plastic parts kit (includes piston, cap, jacket, bonnet, and nut)	93081
14	Adapter, 2" stainless steel ferrule, and bracket only	8802884
15	Drain valve retainer "U" clip	30729
16	Screw, sheet metal, 8 x .5", 18-8 stainless steel, Phillips head	30882
17	Drain valve plunger assembly (flare x thread) for cooler-mounted washer	8822193
18	Seal, rubber, drain valve, 2" x .375" hole (alternate Part No. 21774)	8822394

MM 16.1B

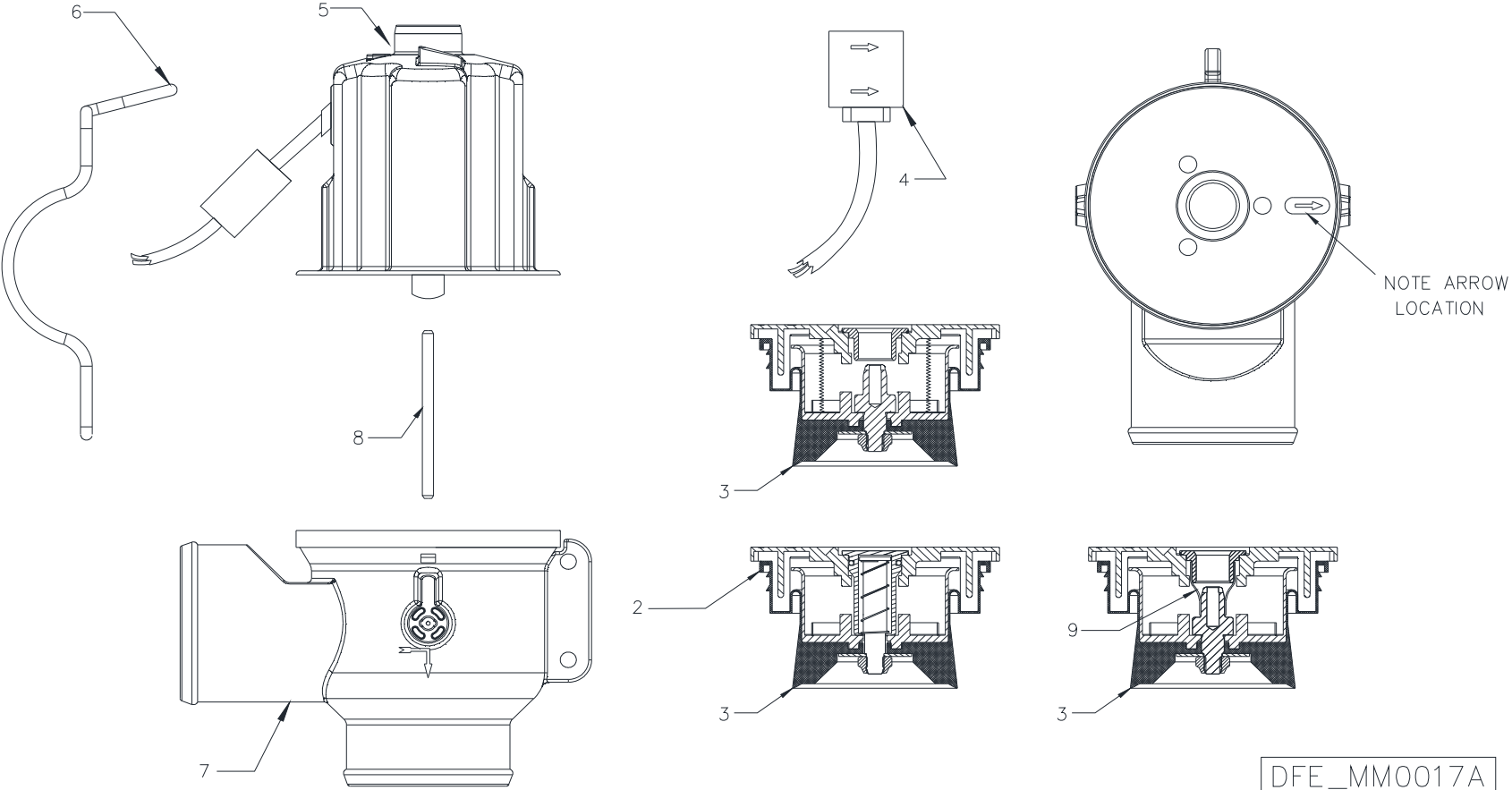
# Replacement Motors and Components



DFE\_MM0016



Mueller Electric Drain Valve (24 VAC)



DFE\_MM0017A







**Visit our website at  
[dfe.paulmueller.com!](http://dfe.paulmueller.com)**

**MUELLER**

1600 West Phelps Street • Springfield, Missouri 65802, U.S.A.  
DFE Sales: 888-645-5826 • Phone: 417-575-9000 • 800-MUELLER  
Fax: 417-575-9887 • 800-436-2466 • [dairyfarm@paulmueller.com](mailto:dairyfarm@paulmueller.com)